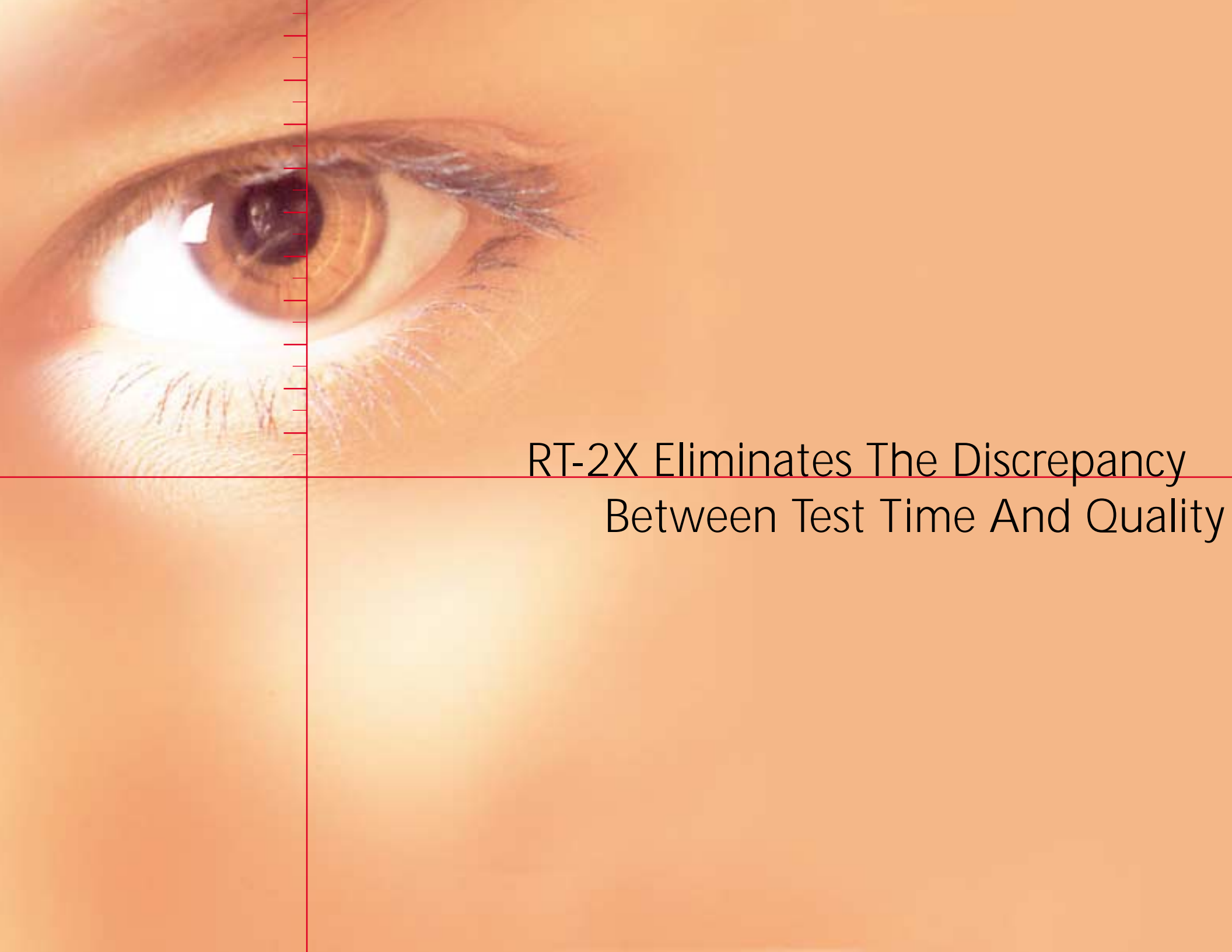


RT-2X

Very Fast Voice Frequency Analyzer With
Full Parametric Test Capabilities For
Production Line Testing Of Telecommunication Equipment

www.rapid-test.com





RT-2X Eliminates The Discrepancy
Between Test Time And Quality

Maintain Quality Control

The RT-2X voice frequency analyzer supports you to establish highest level quality checks within the production line without compromising the throughput.

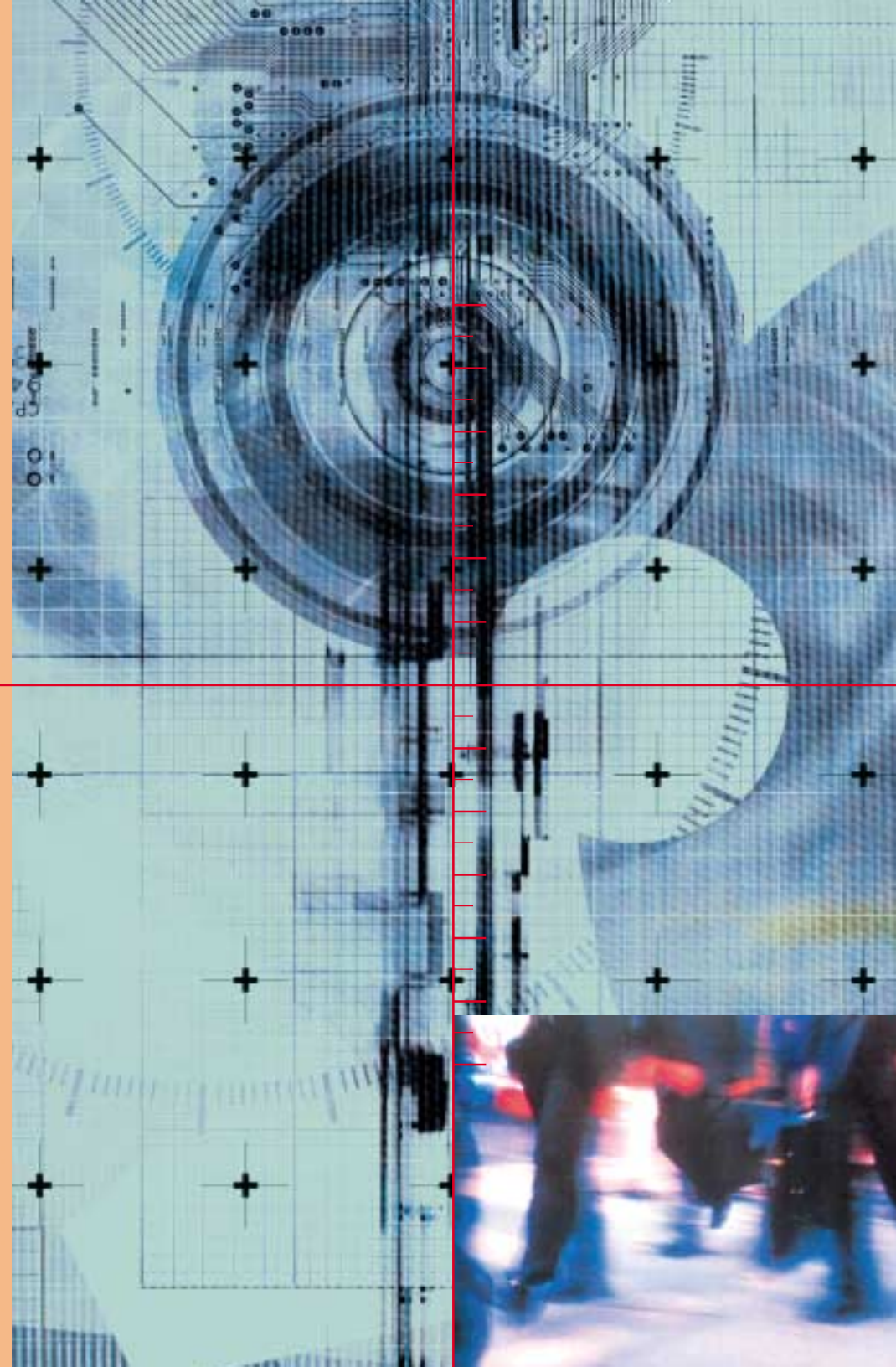
NTI's RT-2X eliminates the discrepancy between test time and quality control. The total test time for a comprehensive test with the RT-Equipment is typically below one second. Nevertheless the RT-2X provides a detailed view of the quality and thus the constancy of the goods manufactured.

Increase Yield

Voice frequency tests, which are optimally distributed along the total production lines detect even subtle defects such as missing components, solder bridges and wrong component values.

Thus, the yield of the more time consuming tests as e.g. RF analysis is increased.

Control





The Flexible Solution For Telecom



Applications



Half Channel Measurements

The input & output sections of the RT-2X are designed to satisfy virtually all requirements of nowadays voice-frequency tests:

- 2-Channel Architecture
- Analog Inputs & Outputs
- Digital Inputs & Outputs: E1/T1, PCM or ISDN BRI
- 9 Standard and 4 User Defined Input & Output Impedance
- Measuring Microphone Plug-in



Control Interfaces

The RT-2X is remote controlled via the parallel GPIB IEEE or the serial RS232 interface. Through the latter, new firmware releases may be downloaded to the system.



Voice Frequency Testing Of Integrated Access Devices

Linecards / xDSL Modems

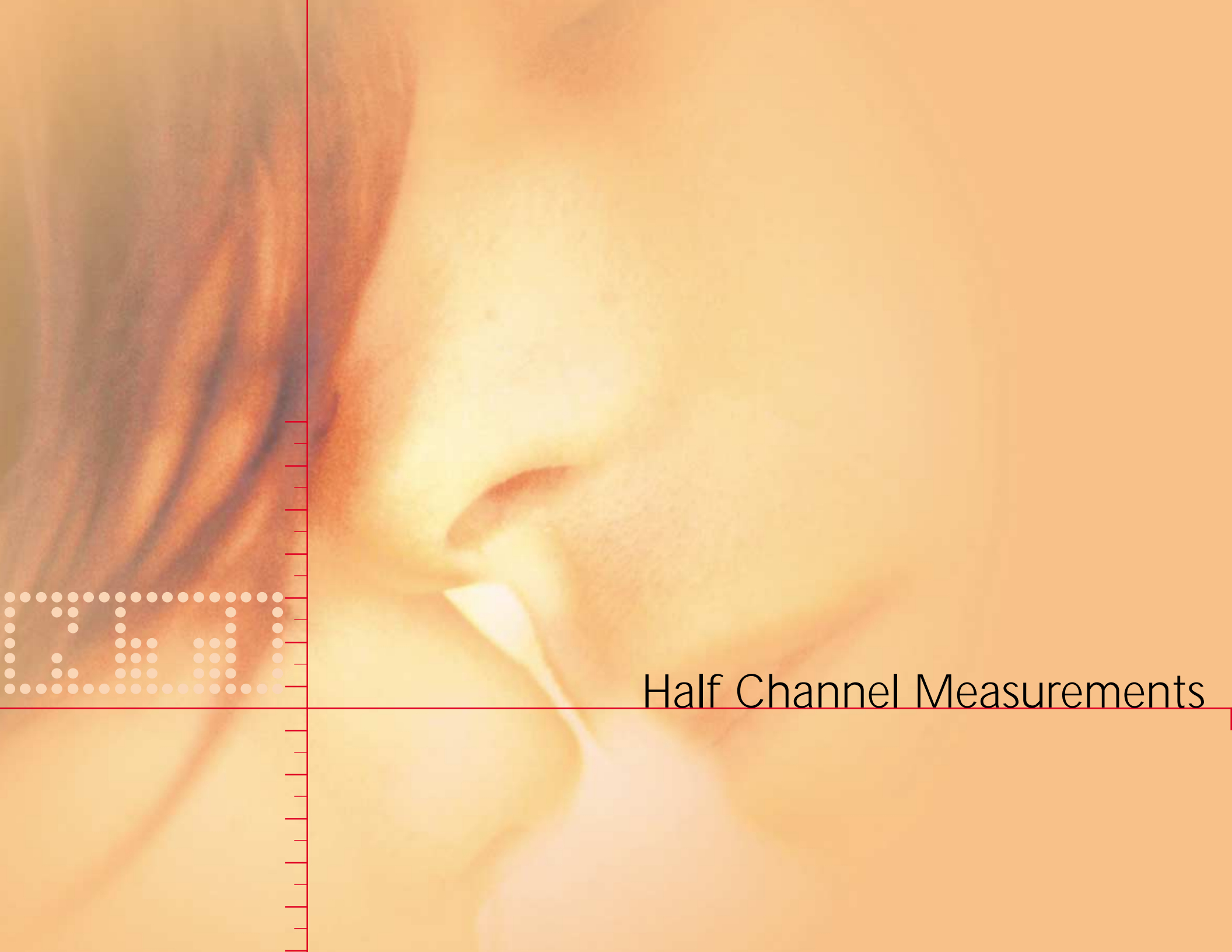
The RT2X provides all of the required features for A-D, D-A ("half channel") and A-A, D-D measurements. This makes the system ideally suited for the testing of IADs (Integrated Access Devices) like linecards or xDSL modems accessing POTS, E1/T1 or ISDN BRI interfaces. A wide range of standard measurement functions like

- Frequency Response
- Loss
- Distortion
- Idle Channel Noise
- Channel Crosstalk
- Return Loss (RL, ERL, SRL)
- Longitudinal Balance (LCL)

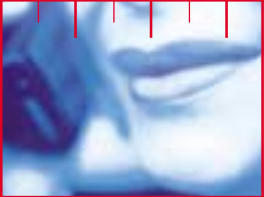
satisfy virtually every possible application. The input & output impedance of the RT-2X are selectable to match the corresponding impedance of the DUT (Device Under Test).

(IAD) Over POTS, ISDN BRI, E1/T1





Half Channel Measurements



Telephone Sets

The flexible 2-channel architecture and its tremendous speed (typical cycle time < 0.5 sec.) make the RT-2X the ideal solution for telephone set testing in the voice-band. The multitone principle, supporting the simultaneous measurement of up to 7 parameters in the voice-band after the transmission of a single burst, is ideally suited for high volume production lines.

In addition RT-2X allows generating & analyzing DTMF (Dual-Tone Multi-Frequency) signals, e.g. to evaluate the performance of a DTMF coder or decoder.

Sound Cards

Performance testing of PC sound cards with the quick and accurate measurements of the RT-2X in the full frequency band from 20 Hz – 20 kHz.

- D/A Conversion Analysis Based on Replay of WAV-files
- Sequential IN and OUT Performance
- MIC or LINE IN to LINE OUT

Speakers & Microphones

Acoustical tests of speakers or microphones are fully supported by the RT-2X. The system enables simple interfacing to reference speakers and measuring microphones as well as tailoring the test signals to the required frequency response of the DUT. Thus, the acoustically transmitted test signal will show a constant Sound Pressure Level (SPL) at all frequencies of interest.



Maximum Speed For High Volume Production



Evaluation Software

The easy-to-use NTI evaluation software package RT-Eval enables configuration of the system into virtually any environment within half an hour. It automatically generates the source code required to operate the test-setup. The integration into customers environment is reduced to "cut and paste".

No Programming

LabView® and LabWindows® CVI driver libraries complement the powerful tools to operate RT-2X in the dedicated environment without time-consuming programming.

Custom Defined Tolerances

RT-Eval allows checking the acquired test results against individual defined tolerance bands and standards like Bellcore TR-NWT-000057 (Functional Criteria for Digital Loop Carrier Systems).



NTI Headquarters
Im alten Riet 102
FL-9494 Schaan
Liechtenstein, Europe
Phone +423 / 239 6060
Fax +423 / 239 6089
info@nt-instruments.com
www.nt-instruments.com

NTI (Montreal)
3520 Griffith Street
St. Laurent, Quebec H4T 1A7
Canada
Phone +1 / 514 / 344 5220
Tollfree +1800 / 661 6388
Fax +1 / 514 / 344 5221
canada@nt-instruments.com
www.nt-instruments.com